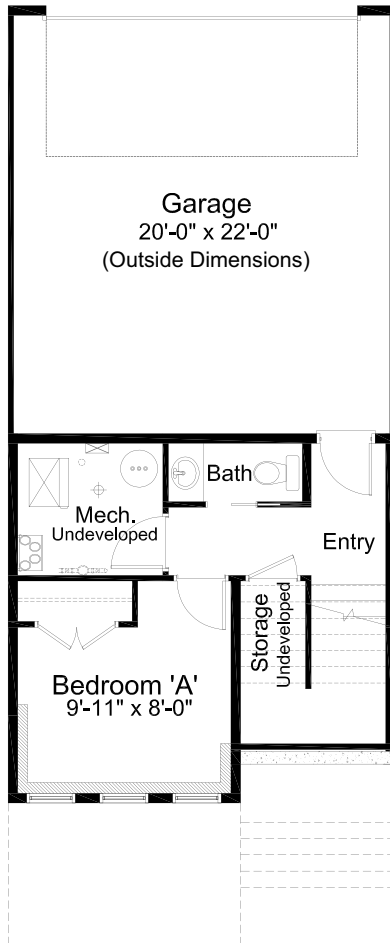




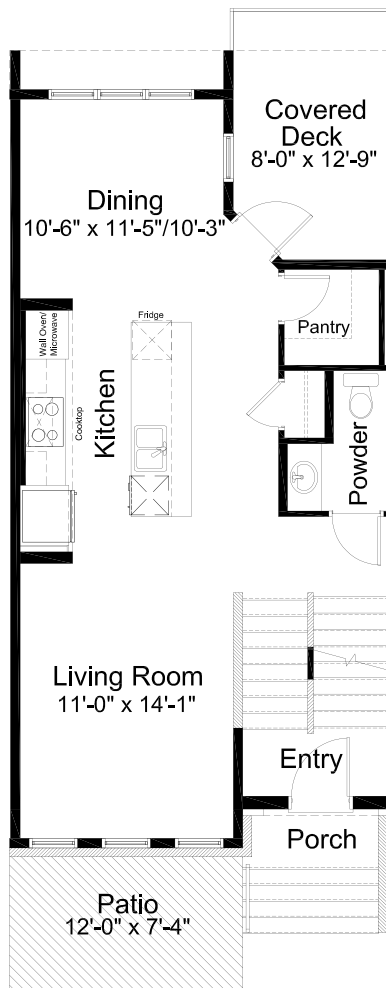
# UNIT 15B-#207, 81 GREENBRIAR PL NW — PERRY

1,700 sq.ft. 20' Wide 4 Bed // 2 Full Bath // 2 Half Bath

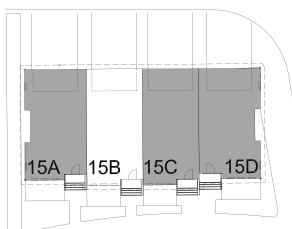
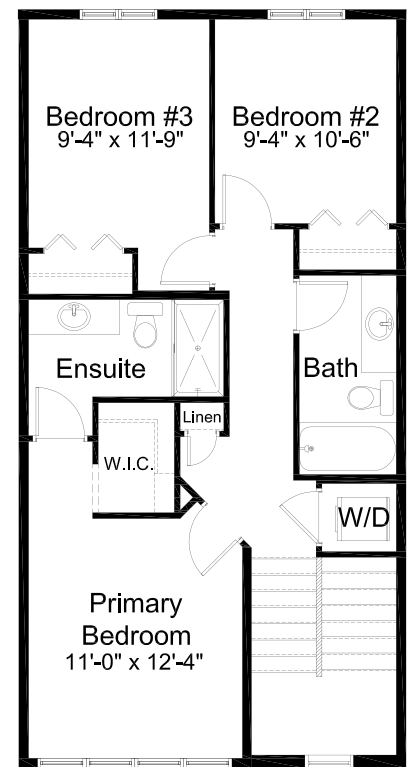
Lower Floor: 230 sq. ft



Main Floor: 690 sq. ft.



Upper Floor: 777 sq. ft.



Outdoor Space: 186 sq. ft.  
Covered Deck: 98 sq. ft.  
Patio: 88 sq. ft.



587-619-1000

LIVEHUDSONWEST.CA

Edited: August 2, 2023

The builder reserves the right to modify or change plans, specifications, features and prices without notice. Materials may be substituted with equivalent or better at the builder's sole discretion. All dimensions and sizes are approximate and are based on architectural measurements. As reverse, mirrored and/or flipped plans occur throughout the building, please see architectural plans if material to your decision to purchase. Renderings, furnishings and equipment shown are an artist's conception and are intended as a general reference only. Please see disclosure statement for specific offering details. E. & O.E.