

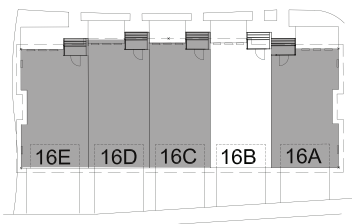
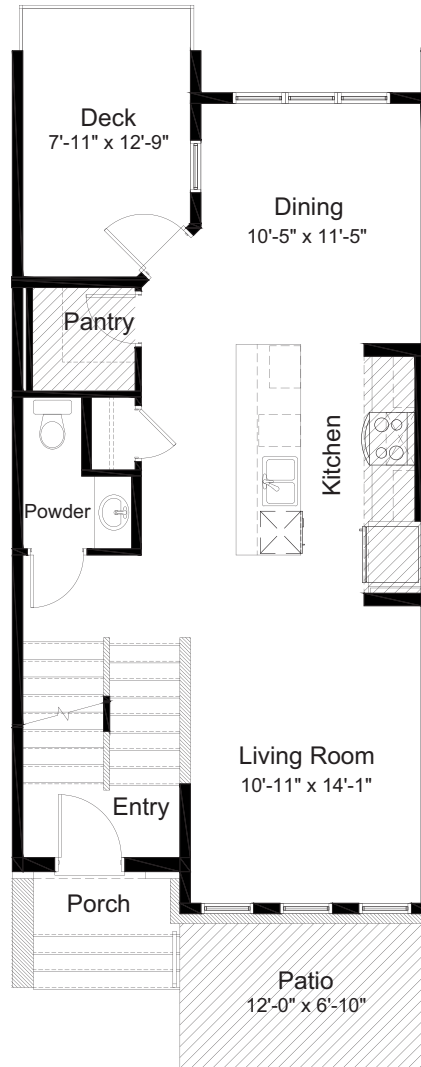
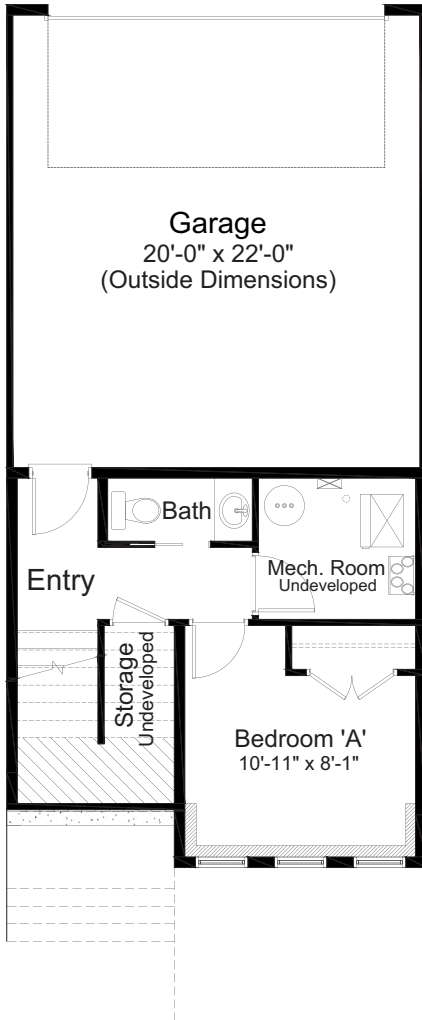
# UNIT 16B-#323, 81 GREENBRIAR PL NW — PERRY

1,698 sq.ft.    20' Wide    4 Bed // 2 Full Bath // 2 Half Bath

Lower Floor: 231 sq. ft.

Main Floor: 690 sq. ft.

Upper Floor: 777 sq. ft.

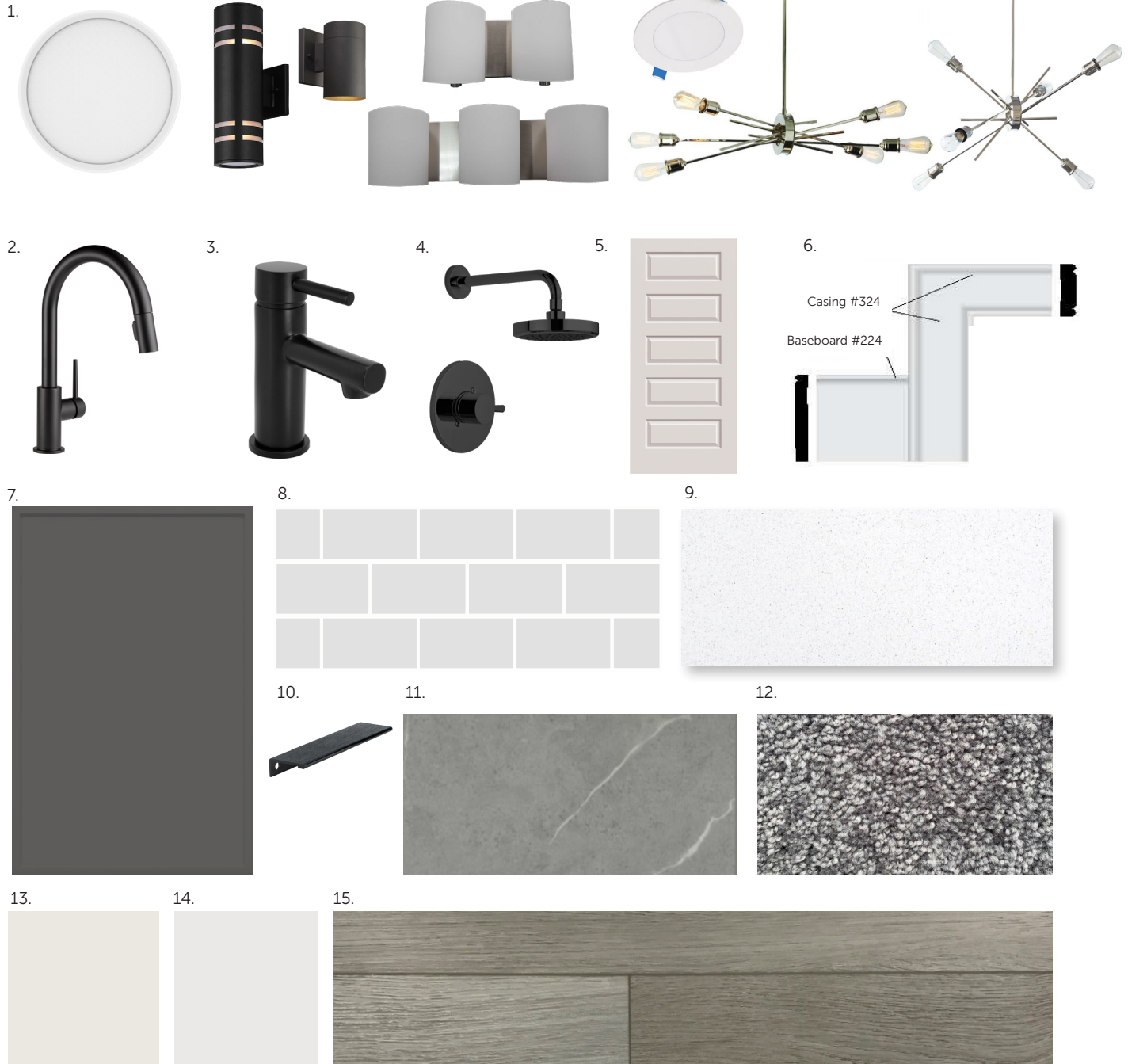


Outdoor Space: 186 sq. ft.  
Covered Deck: 98 sq. ft.  
Patio: 88 sq. ft.



- Whirlpool Kitchen Appliance Package
- Whirlpool Washer & Dryer
- Matte Black Ensuite Shower Frame

- Matte Black Bathroom Hardware
- Matte Black Interior Door Hardware
- Hemlock Railing Design



- Standard Hudson West Lighting Package
- Delta Trinsic Pull-Down 9159-BL-DST 1H - Matte Black
- Delta Tommy 691LF-BL Bath Faucet - Matte Black
- Delta Tommy 14291-BL Ensuite Shower Trim - Matte Black
- Benton 5-Panel Raised Door
- Transitional Baseboards & Casings
- Kitchen & Bath Cabinets - Walden - Thermofoil - Graphite
- Wall Tile - Ceratec Tile - Essential - Argento Glossy - 4" x 8"

- Kitchen & Bath Countertops - Caesarstone - White Sands
- Hardware - Richelieu - Contemporary Aluminum Edge Pull
- Luxury Vinyl Floor Tile - Taiga - Arizona Series - Yuma
- Carpet - Mohawk SP025 06
- Cloverdale Artisan Paint - Wall: CA021 Sugar
- Cloverdale Artisan Paint - Trim: CA025 Standard White
- Luxury Vinyl Plank Flooring - Taiga Arizona Series - Flagstaff

Edited: November 8, 2023

The builder reserves the right to modify or change plans, specifications, features and prices without notice. Materials may be substituted with equivalent or better at the builder's sole discretion. All dimensions and sizes are approximate and are based on architectural measurements. As reverse, mirrored and/or flipped plans occur throughout the building, please see architectural plans if material to your decision to purchase. Renderings, furnishings and equipment shown are an artist's conception and are intended as a general reference only. Please see disclosure statement for specific offering details. E. & O.E.