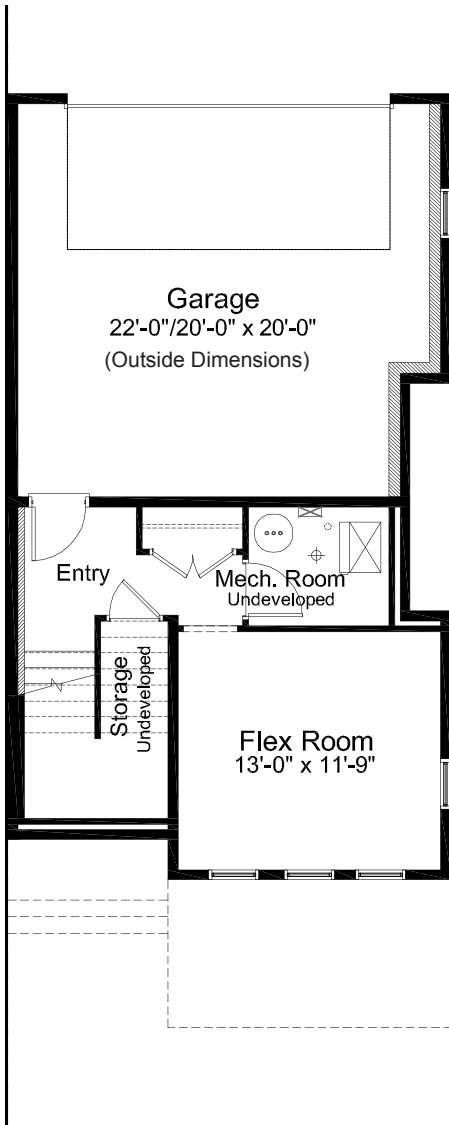


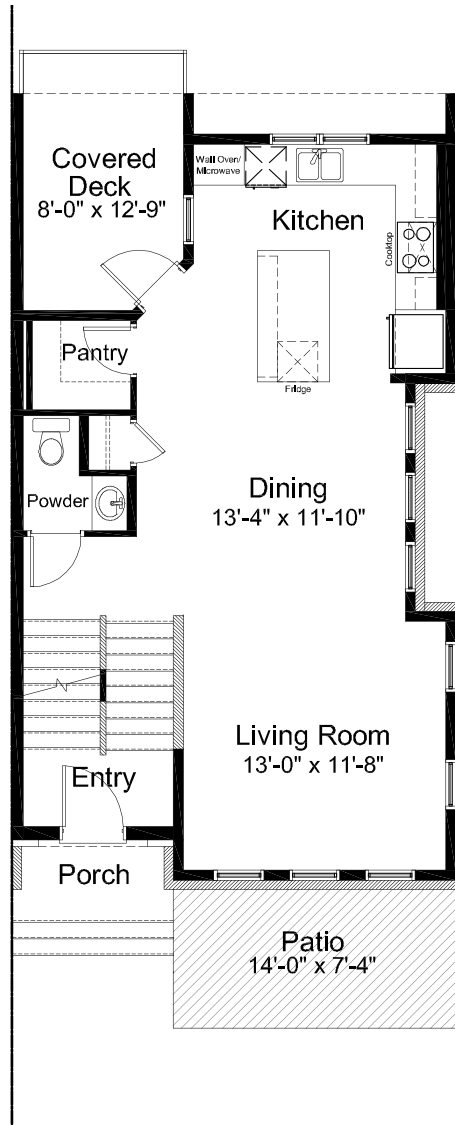
MADISON

20' // 1755 SQ. FT. // 3 BED // 2.5 BATHS



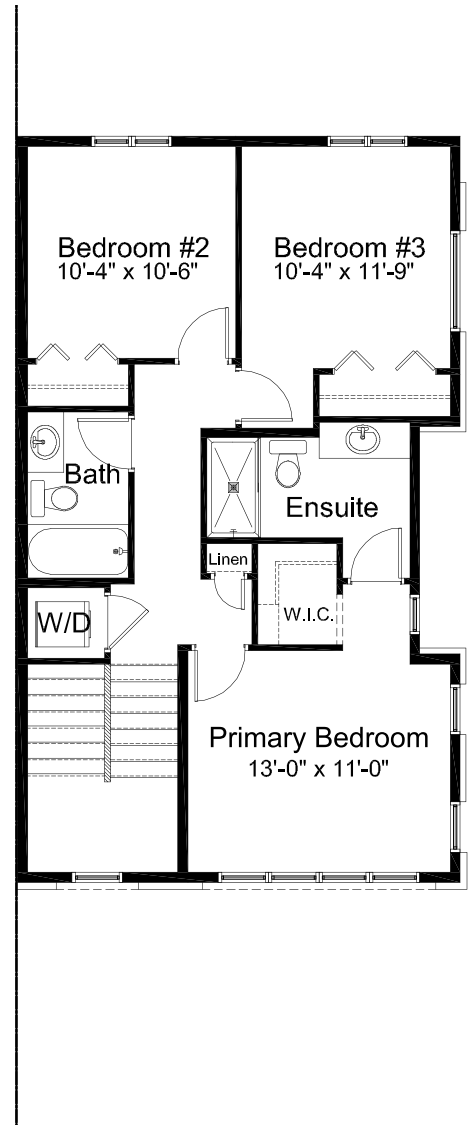
LOWER FLOOR - BASE PLAN

260 SQ. FT.



MAIN FLOOR - BASE PLAN

704 SQ. FT.



UPPER FLOOR - BASE PLAN

791 SQ. FT.

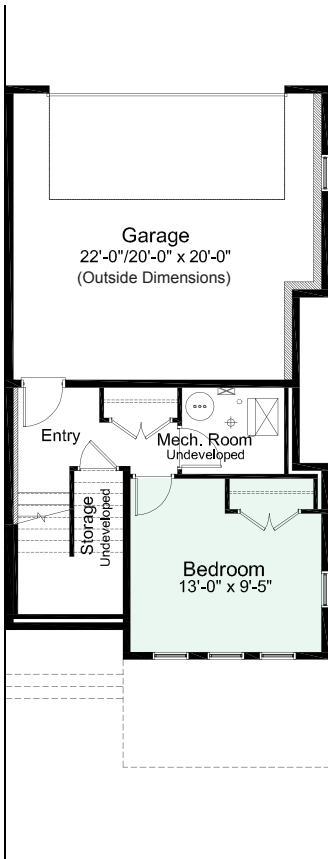
Edited: January 29, 2024

The builder reserves the right to modify or change plans, specifications, features and prices without notice. Materials may be substituted with equivalent or better at the builder's sole discretion. All dimensions and sizes are approximate and are based on architectural measurements. As reverse, mirrored and/or flipped plans occur throughout the building, please see architectural plans if material to your decision to purchase. Renderings, furnishings and equipment shown are an artist's conception and are intended as a general reference only. Please see disclosure statement for specific offering details. E. & O.E.

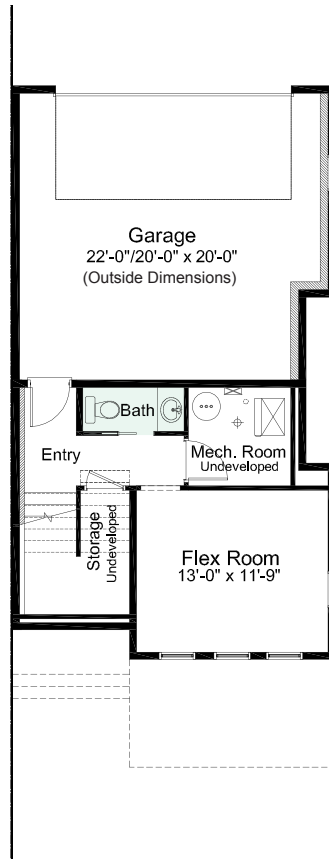
MADISON

20' // 1755 SQ. FT. // 3 BED // 2.5 BATHS

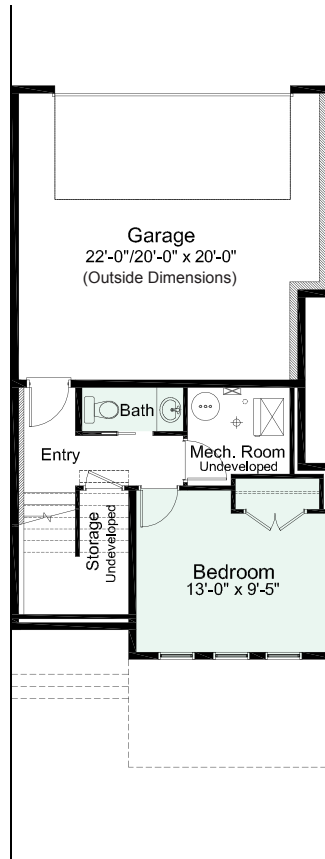
PRE-PLANNED OPTIONS



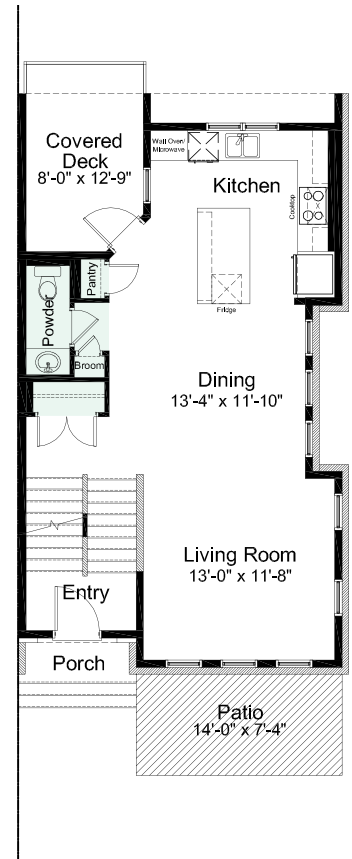
**LOWER FLOOR
BEDROOM OPTION**
260 SQ. FT.



**LOWER FLOOR
FLEX ROOM & BATH OPTION**
260 SQ. FT.



**LOWER FLOOR
BEDROOM & BATH OPTION**
260 SQ. FT.



**MAIN FLOOR
REVISED POWDER OPTION**
704 SQ. FT.

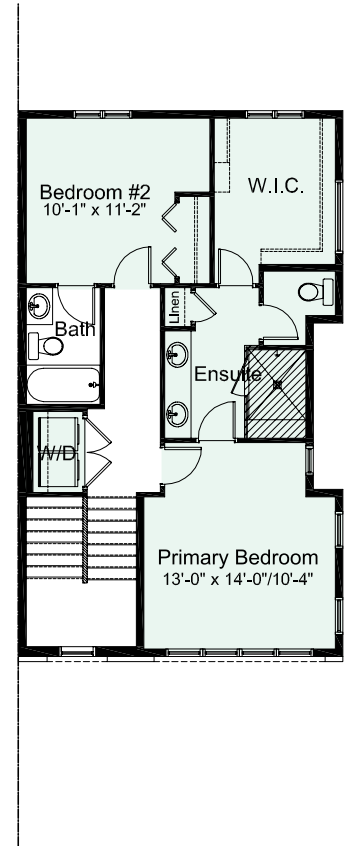
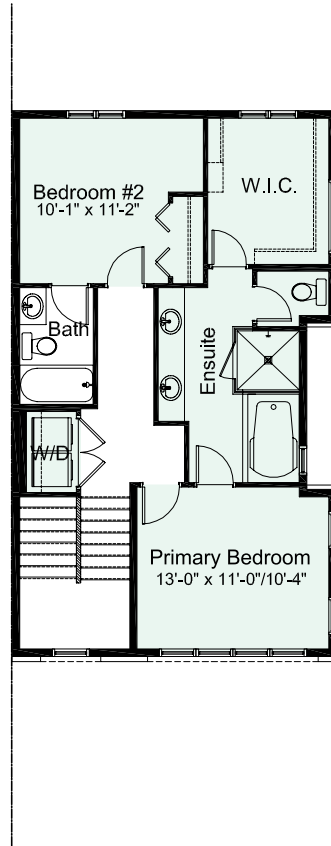
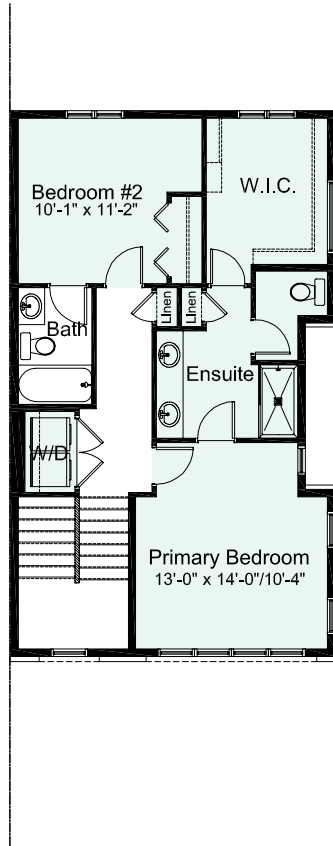
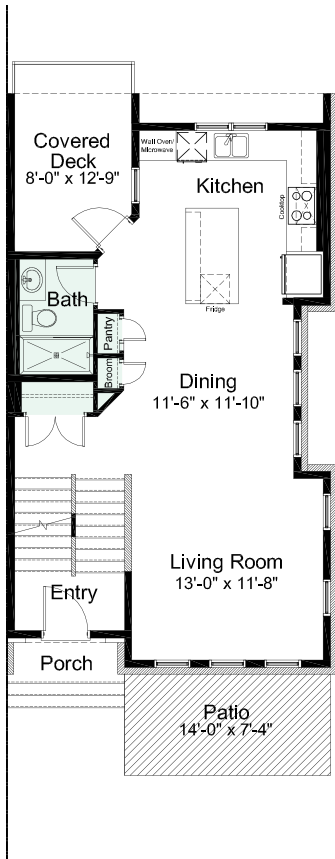
Edited: January 29, 2024

The builder reserves the right to modify or change plans, specifications, features and prices without notice. Materials may be substituted with equivalent or better at the builder's sole discretion. All dimensions and sizes are approximate and are based on architectural measurements. As reverse, mirrored and/or flipped plans occur throughout the building, please see architectural plans if material to your decision to purchase. Renderings, furnishings and equipment shown are an artist's conception and are intended as a general reference only. Please see disclosure statement for specific offering details. E. & O.E.

MADISON

20' // 1755 SQ. FT. // 3 BED // 2.5 BATHS

PRE-PLANNED OPTIONS



MAIN FLOOR
FULL BATH OPTION
704 SQ. FT.

3-PIECE BATHROOM

UPPER FLOOR
2 BEDROOM OPTION
791 SQ. FT.

LARGER PRIMARY BEDROOM
LARGER VANITY W/ DOUBLE SINKS
WATER CLOSET
LARGER W.I.C.
EXTRA LINEN CLOSET
SIDE BY SIDE WASHER & DRYER

UPPER FLOOR
2 BEDROOM W/ SPA OPTION
791 SQ. FT.

LARGER VANITY W/ DOUBLE SINKS
WATER CLOSET
LARGER W.I.C.
SOAKER TUB
TILED SHOWER W/ GLASS
SIDE BY SIDE WASHER & DRYER

UPPER FLOOR
2 BEDROOM OPTION #2
791 SQ. FT.

LARGER PRIMARY BEDROOM
LARGER VANITY W/ DOUBLE SINKS
WATER CLOSET
LARGER W.I.C.
TILED SHOWER W/ GLASS
SIDE BY SIDE WASHER & DRYER

Edited: January 29, 2024

The builder reserves the right to modify or change plans, specifications, features and prices without notice. Materials may be substituted with equivalent or better at the builder's sole discretion. All dimensions and sizes are approximate and are based on architectural measurements. As reverse, mirrored and/or flipped plans occur throughout the building, please see architectural plans if material to your decision to purchase. Renderings, furnishings and equipment shown are an artist's conception and are intended as a general reference only. Please see disclosure statement for specific offering details. E. & O.E.

MADISON FEATURES:

- 3 Bedrooms
- 2.5 Bathrooms
- Open Concept Living Area
- Gourmet Kitchen
- Whirlpool® Stainless Steel Appliances
- Triple Pane Windows
- Extra Windows
- Walk-in Pantry
- Upper Floor Laundry
- Double Garage
- Front Patio
- 9' Main Floor & Basement
- 8' Upper Floors
- Front Porch
- Luxury Vinyl Plank Flooring
- Quartz Countertops
- LED Light Fixtures
- Smart Programmable Thermostat

NOTES

GET IN TOUCH

587-619-1000 | livehudsonwest.ca

alliston head office
1500, 150 9th ave sw, calgary, ab t2p 3h9
info@allistongroup.ca | 403-217-9970 | allistongroup.ca



alliston
AT HOME