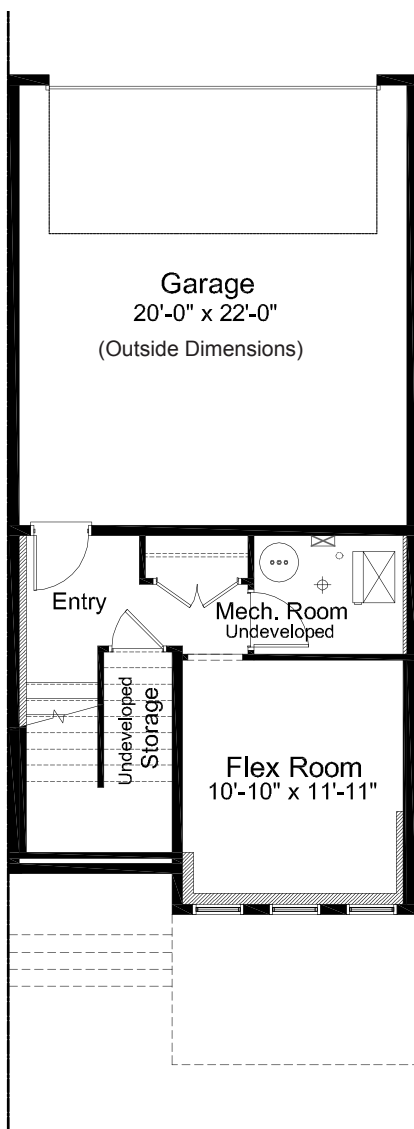


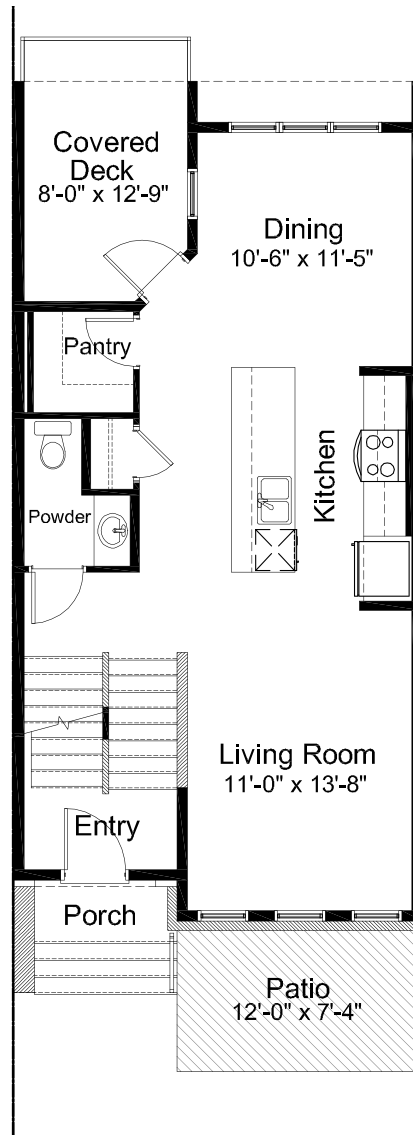
PERRY

20' // 1700 SQ. FT. // 3 BED // 2.5 BATHS



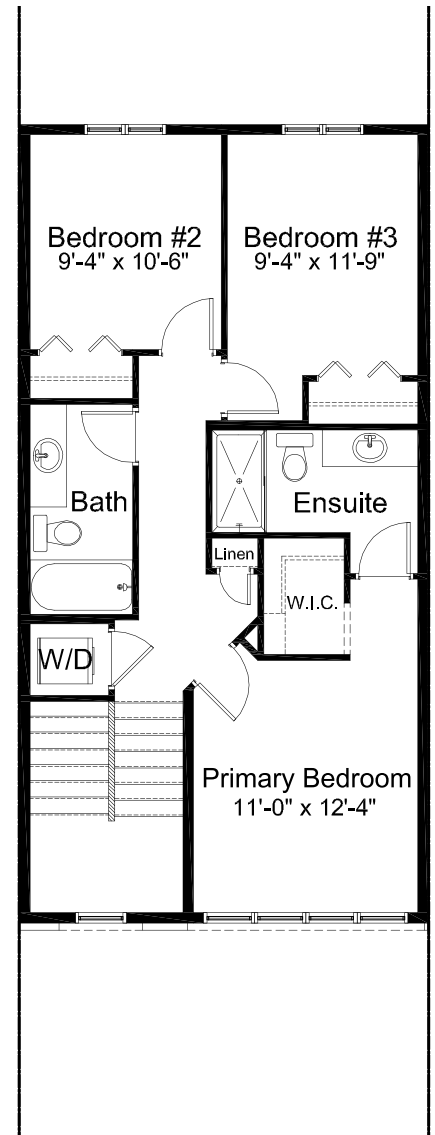
LOWER FLOOR - BASE PLAN

233 SQ. FT.



MAIN FLOOR - BASE PLAN

690 SQ. FT.



UPPER FLOOR - BASE PLAN

777 SQ. FT.

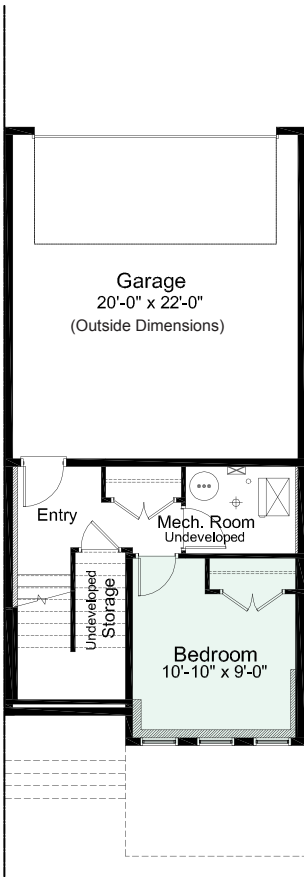
Edited: January 29, 2024

The builder reserves the right to modify or change plans, specifications, features and prices without notice. Materials may be substituted with equivalent or better at the builder's sole discretion. All dimensions and sizes are approximate and are based on architectural measurements. As reverse, mirrored and/or flipped plans occur throughout the building, please see architectural plans if material to your decision to purchase. Renderings, furnishings and equipment shown are an artist's conception and are intended as a general reference only. Please see disclosure statement for specific offering details. E. & O.E.

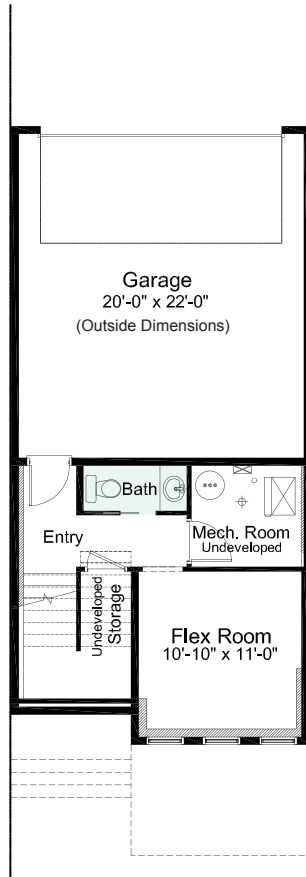
PERRY

20' // 1700 SQ. FT. // 3 BED // 2.5 BATHS

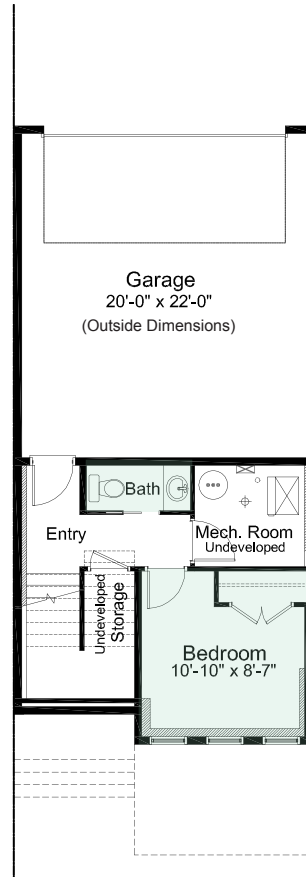
PRE-PLANNED OPTIONS



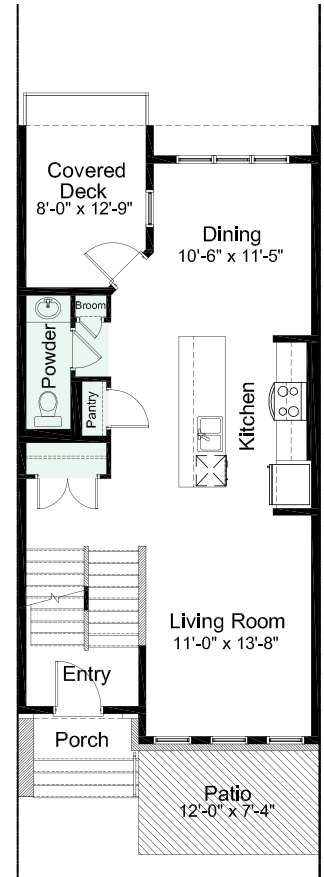
LOWER FLOOR
BEDROOM OPTION
233 SQ. FT.



LOWER FLOOR
FLEX ROOM & BATH OPTION
233 SQ. FT.



LOWER FLOOR
BEDROOM & BATH OPTION
233 SQ. FT.



MAIN FLOOR
REVISED POWDER OPTION
690 SQ. FT.

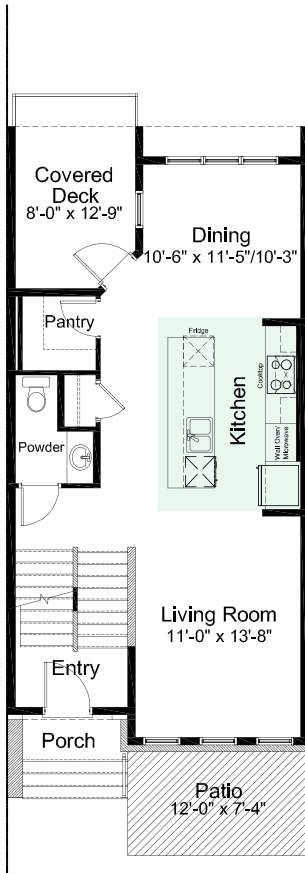
Edited: January 29, 2024

The builder reserves the right to modify or change plans, specifications, features and prices without notice. Materials may be substituted with equivalent or better at the builder's sole discretion. All dimensions and sizes are approximate and are based on architectural measurements. As reverse, mirrored and/or flipped plans occur throughout the building, please see architectural plans if material to your decision to purchase. Renderings, furnishings and equipment shown are an artist's conception and are intended as a general reference only. Please see disclosure statement for specific offering details. E. & O.E.

PERRY

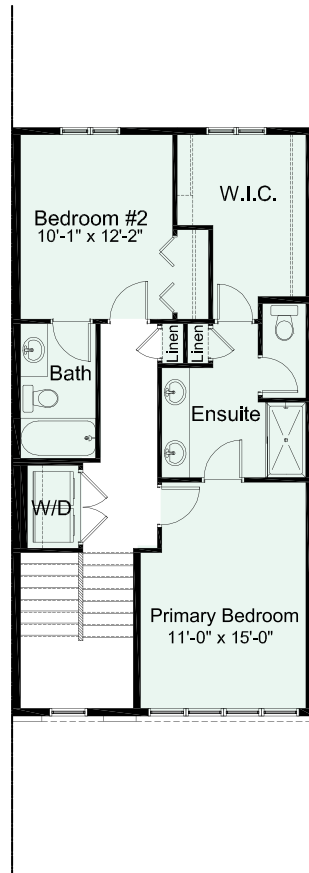
20' // 1700 SQ. FT. // 3 BED // 2.5 BATHS

PRE-PLANNED OPTIONS



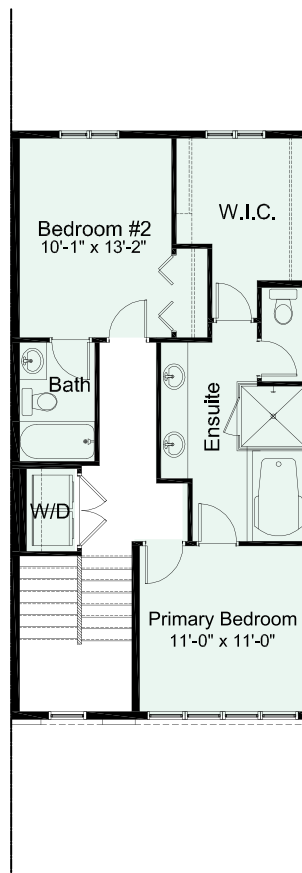
MAIN FLOOR
GOURMET KITCHEN OPTION
690 SQ. FT.

- LARGER ISLAND
- WALL OVEN/MICROWAVE
- HOOD FAN
- COOKTOP
- BAR FRIDGE



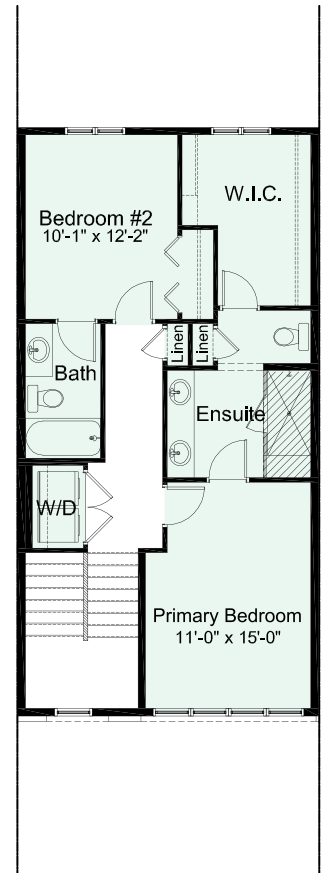
UPPER FLOOR
2 BEDROOM OPTION
777 SQ. FT.

- LARGER PRIMARY BEDROOM
- LARGER VANITY W/ DOUBLE SINKS
- WATER CLOSET
- LARGER W.I.C.
- EXTRA LINEN CLOSET
- SIDE BY SIDE WASHER & DRYER



UPPER FLOOR
2 BEDROOM W/ SPA OPTION
777 SQ. FT.

- LARGER VANITY W/ DOUBLE SINKS
- WATER CLOSET
- LARGER W.I.C.
- SOAKER TUB
- TILED SHOWER W/ GLASS
- SIDE BY SIDE WASHER & DRYER



UPPER FLOOR
2 BEDROOM OPTION #2
777 SQ. FT.

- LARGER PRIMARY BEDROOM
- LARGER VANITY W/ DOUBLE SINKS
- WATER CLOSET
- LARGER W.I.C.
- TILED SHOWER W/ GLASS
- SIDE BY SIDE WASHER & DRYER

Edited: January 29, 2024

The builder reserves the right to modify or change plans, specifications, features and prices without notice. Materials may be substituted with equivalent or better at the builder's sole discretion. All dimensions and sizes are approximate and are based on architectural measurements. As reverse, mirrored and/or flipped plans occur throughout the building, please see architectural plans if material to your decision to purchase. Renderings, furnishings and equipment shown are an artist's conception and are intended as a general reference only. Please see disclosure statement for specific offering details. E. & O.E.

PERRY FEATURES:

- 3 Bedrooms
- 2.5 Bathrooms
- Open Concept Living Area
- Central Kitchen
- Whirlpool® Stainless Steel Appliances
- Walk-in Pantry
- Upper Floor Laundry
- Triple Pane Windows
- Double Garage
- Front Patio
- 9' Main Floor & Basement
- 8' Upper Floors
- Front Porch
- Luxury Vinyl Plank Flooring
- Quartz Countertops
- LED Light Fixtures
- Smart Programmable Thermostat

NOTES

GET IN TOUCH

587-619-1000 | livehudsonwest.ca

alliston head office
1500, 150 9th ave sw, calgary, ab t2p 3h9
info@allistongroup.ca | 403-217-9970 | allistongroup.ca



alliston
AT HOME