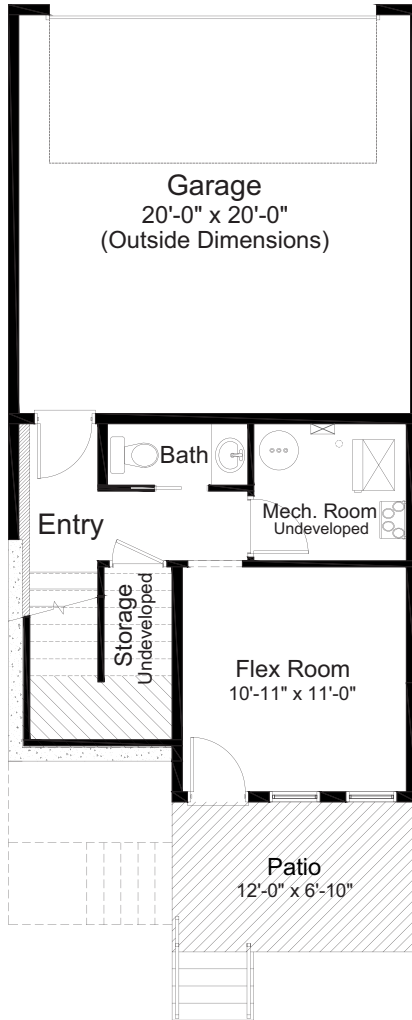


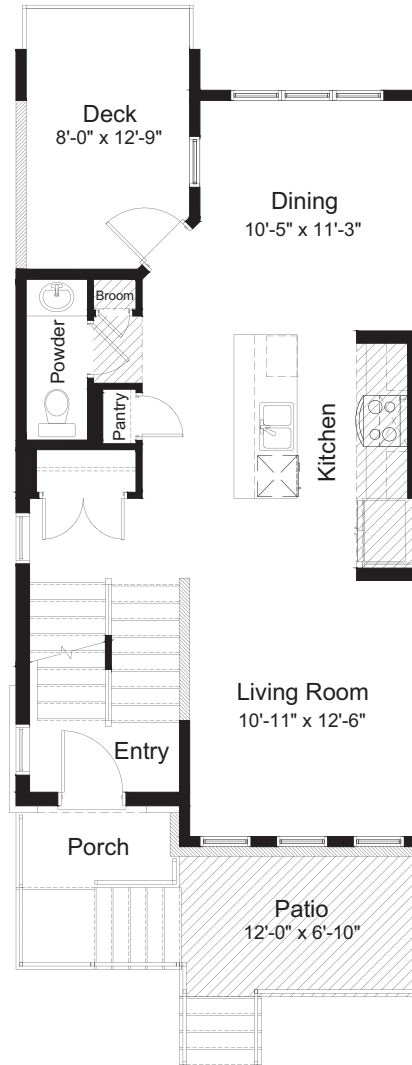
UNIT 7A – 67 GREENBRIAR PL NW – HOLLAND

1,620 sq.ft. 20' Wide 3 Bed // 2 Full Bath // 2 Half Bath

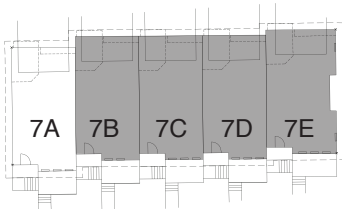
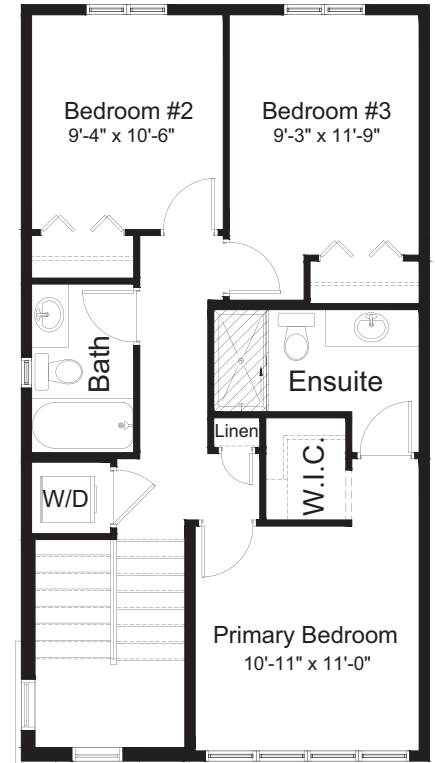
Lower Floor: 231 sq. ft



Main Floor: 651 sq. ft.



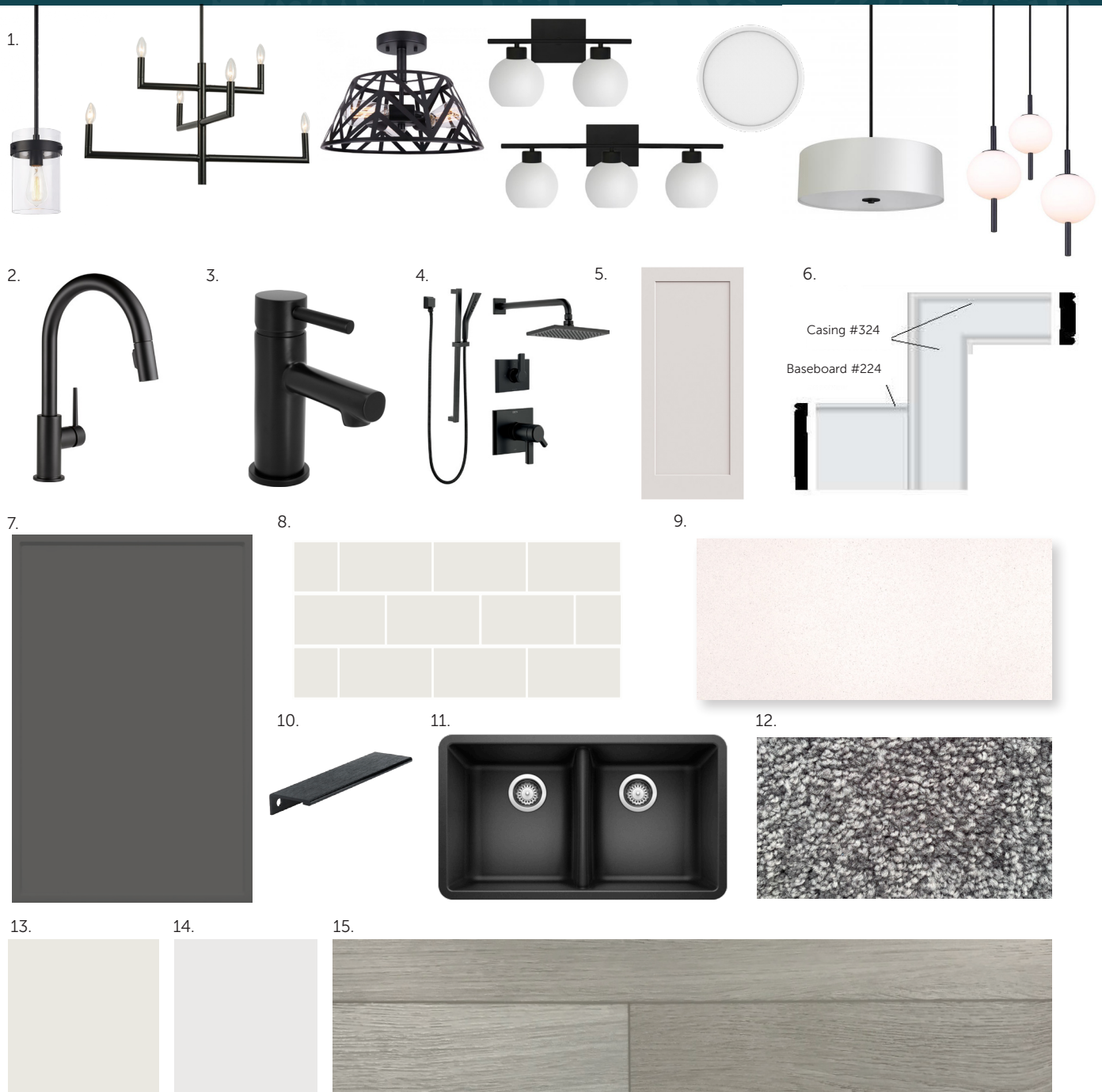
Upper Floor: 738 sq. ft.



Outdoor Space: 187 sq. ft.
Covered Deck: 99 sq. ft.
Patio: 88 sq. ft.



- Whirlpool Kitchen Appliance Package
- Whirlpool Washer & Dryer
- Matte Black Ensuite Shower Frame
- Matte Black Bathroom Hardware
- Matte Black Interior Door Hardware
- Hemlock Railing Design



- | | |
|--|--|
| 1. Linden Lighting Package | 9. Kitchen & Bath Countertops - Caesarstone - White Sands |
| 2. Kitchen Faucet - Delta Trinsic Pull-Down - Matte Black | 10. Hardware - Richelieu - Contemporary Aluminum Edge Pull |
| 3. Bath Faucet - Delta Tommy - Matte Black | 11. Kitchen Sink - Blanco Horizon U2 - Anthracite |
| 4. Ensuite Shower Trim - Delta Pivotal - Matte Black | 12. Carpet - Mohawk SP025 06 |
| 5. Interior Doors - Mercer Flat Panel | 13. Wall Paint - Cloverdale Artisan CA021 Sugar |
| 6. Baseboards & Casings - Transitional | 14. Trim Paint - Cloverdale Artisan CA025 Standard White |
| 7. Kitchen & Bath Cabinets - Slim Shaker 110 - Charcoal Grey | 15. Luxury Vinyl Plank Flooring - Taiga Arizona Series - Flagstaff |
| 8. Wall Tile - Ceratec Tile - Essential - Argento Glossy - 4" x 8" | |

Edited: March 1, 2024

The builder reserves the right to modify or change plans, specifications, features and prices without notice. Materials may be substituted with equivalent or better at the builder's sole discretion. All dimensions and sizes are approximate and are based on architectural measurements. As reverse, mirrored and/or flipped plans occur throughout the building, please see architectural plans if material to your decision to purchase. Renderings, furnishings and equipment shown are an artist's conception and are intended as a general reference only. Please see disclosure statement for specific offering details. E. & O.E.