



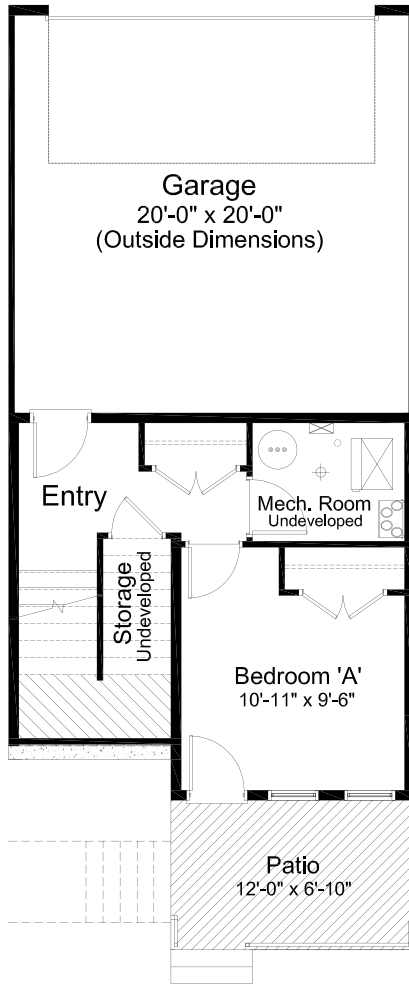
UNIT 7D – 73 GREENBRIAR PL NW – HOLLAND

1,621 sq.ft.

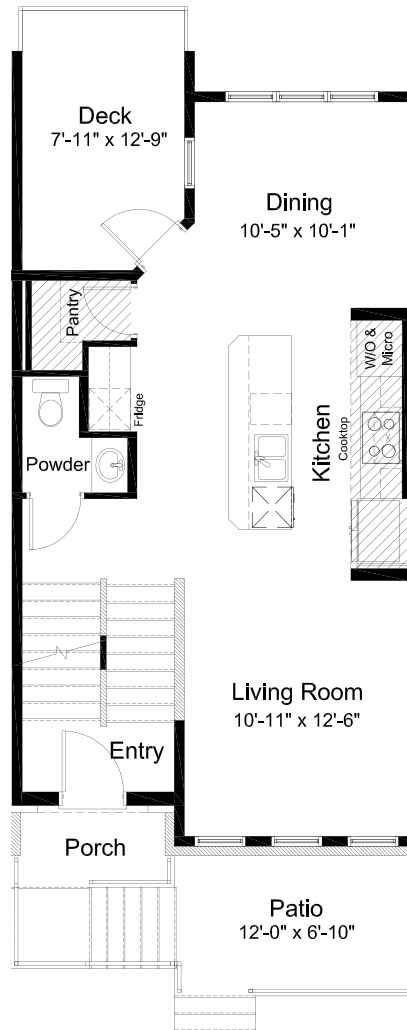
20' Wide

3 Bed // 2.5 Half Bath

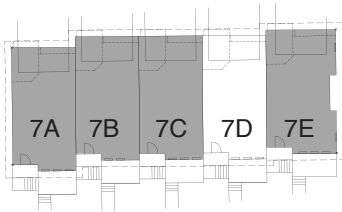
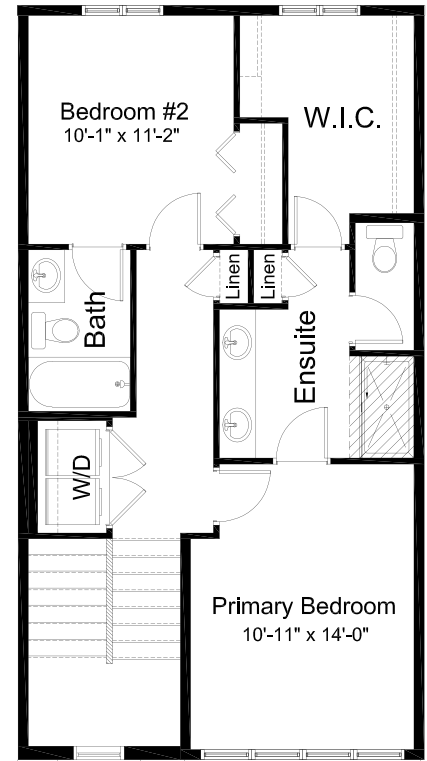
Lower Floor: 234 sq. ft



Main Floor: 650 sq. ft.



Upper Floor: 737 sq. ft.



Outdoor Space: 186 sq. ft.

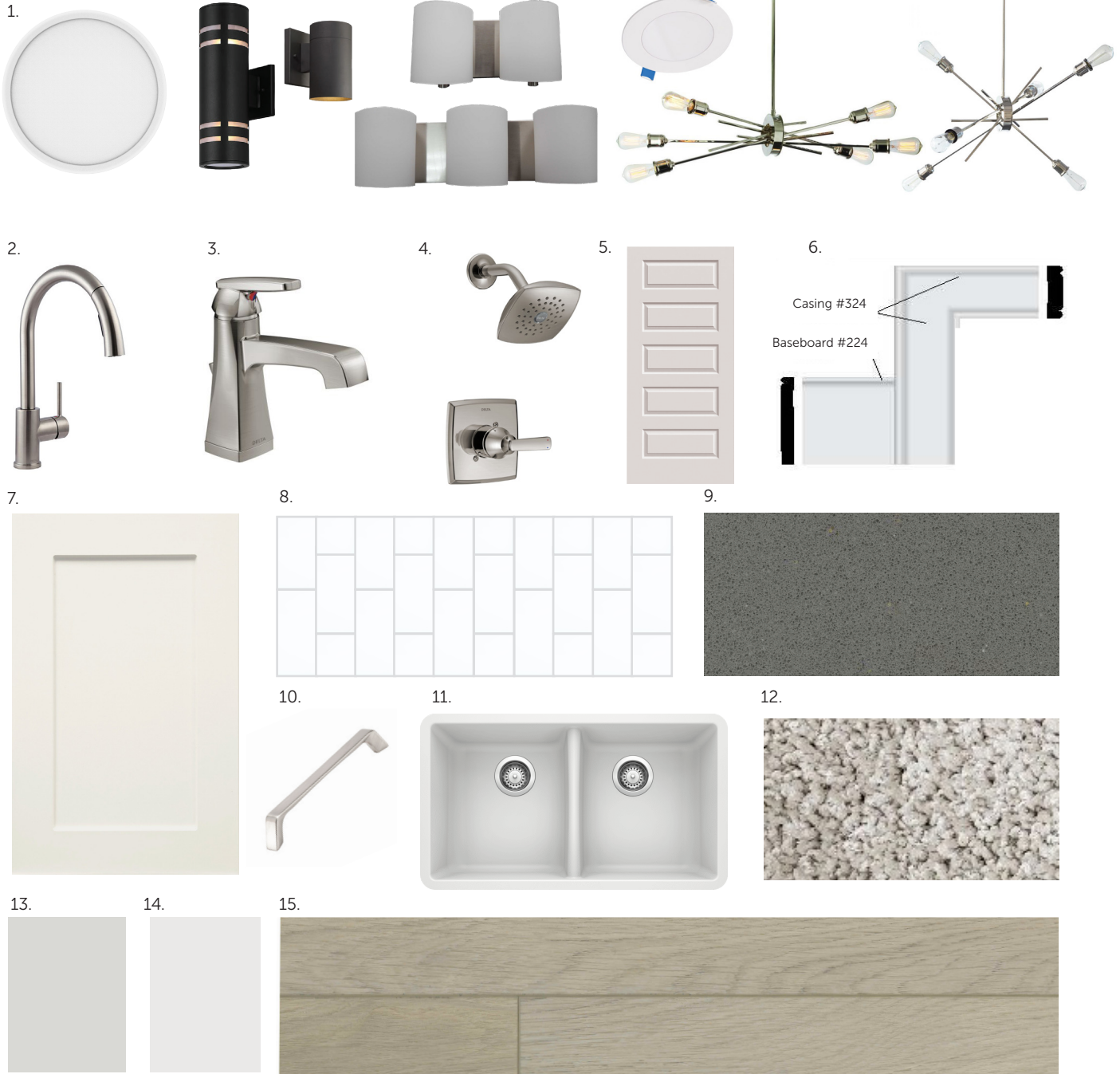
Covered Deck: 98 sq. ft.

Patio: 88 sq. ft.



- Gourmet Kitchen Appliance Package
- Whirlpool Washer & Dryer
- Satin Nickel Bathroom Hardware

- Satin Nickel Interior Door Hardware
- Undermount Bathroom Sink Basins
- Chrome 10mm Ensuite Shower Door



- | | |
|---|---|
| 1. Standard Hudson West Lighting Package | 9. Kitchen & Bath Countertops - Silestone Quartz - Grey Expo |
| 2. Kitchen Faucet - Delta Osler - Stainless Steel | 10. Hardware - Richelieu - Metal Pull 7348 - Brushed Nickel |
| 3. Bath Faucet - Delta Ashlyn - Stainless Steel | 11. Kitchen Sink - Blanco Horizon U2 - White |
| 4. Ensuite Shower Trim - Delta Ashlyn - Stainless Steel | 12. Carpet - Mohawk SP025 03 |
| 5. Interior Doors - Benton 5 Panel Raised | 13. Wall Paint - Cloverdale Artisan - CA028 Mist |
| 6. Baseboards & Casings - Transitional | 14. Trim Paint - Cloverdale Artisan - CA025 Standard White |
| 7. Kitchen & Bath Cabinets - Shaker 100 - Frosty White | 15. Luxury Vinyl Plank Flooring - Taiga Arizona Series - Scottsdale |
| 8. Wall Tile - Ceratec Tile - Essential - Bianco 3" x 6" Glossy | |

Edited: April 8, 2024

The builder reserves the right to modify or change plans, specifications, features and prices without notice. Materials may be substituted with equivalent or better at the builder's sole discretion. All dimensions and sizes are approximate and are based on architectural measurements. As reverse, mirrored and/or flipped plans occur throughout the building, please see architectural plans if material to your decision to purchase. Renderings, furnishings and equipment shown are an artist's conception and are intended as a general reference only. Please see disclosure statement for specific offering details. E. & O.E.